



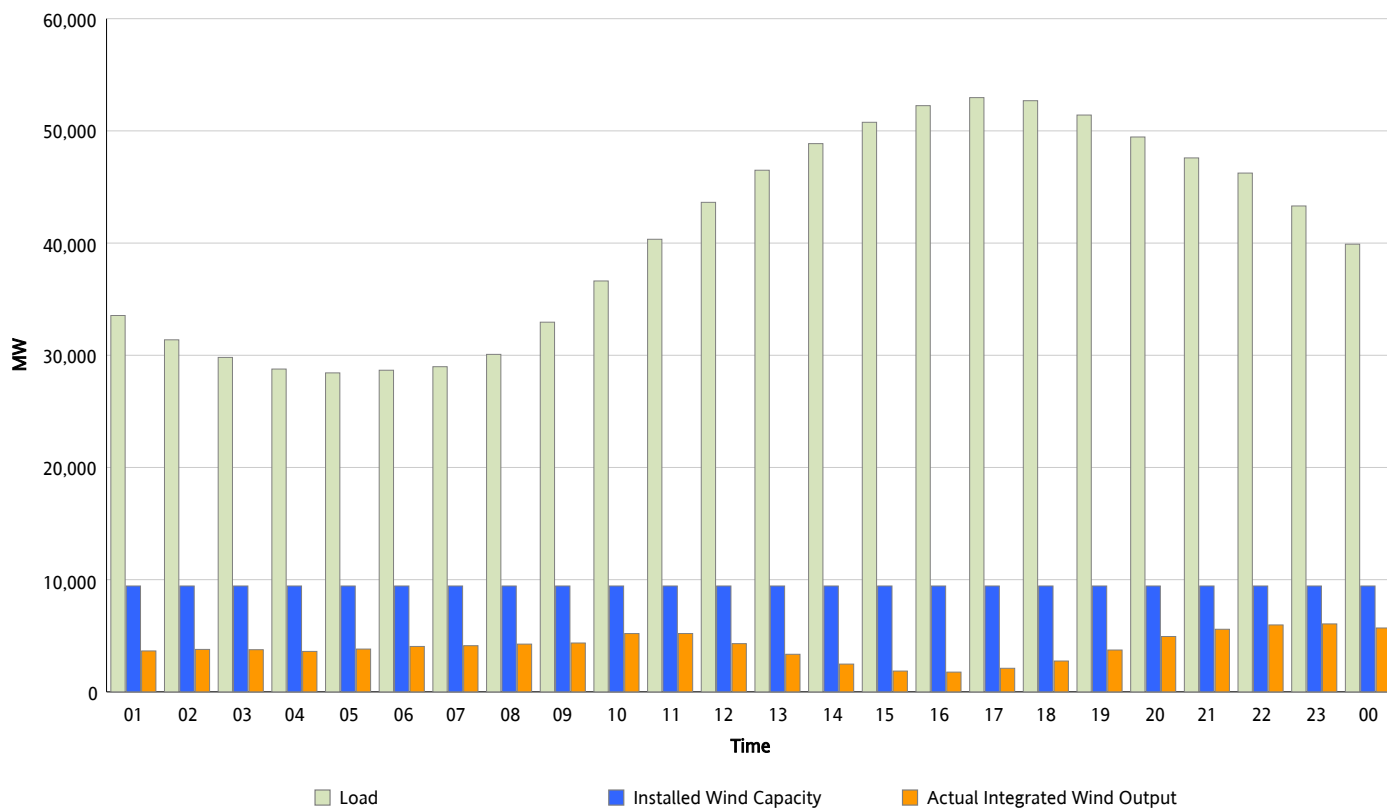
ERCOT Grid Operations

Wind Integration Report : 06/09/2012

Peak Load	52,965 MW
Load Peak Hour (HE)	17
Wind Over Peak	2,102 MW
Wind Record 04/13/12	7,925 MW
Max Wind Value*	6,294 MW
Wind Peak Time	22:39
Wind Integration %	14.66 %

Hourly Average Actual Load vs. Actual Wind Output

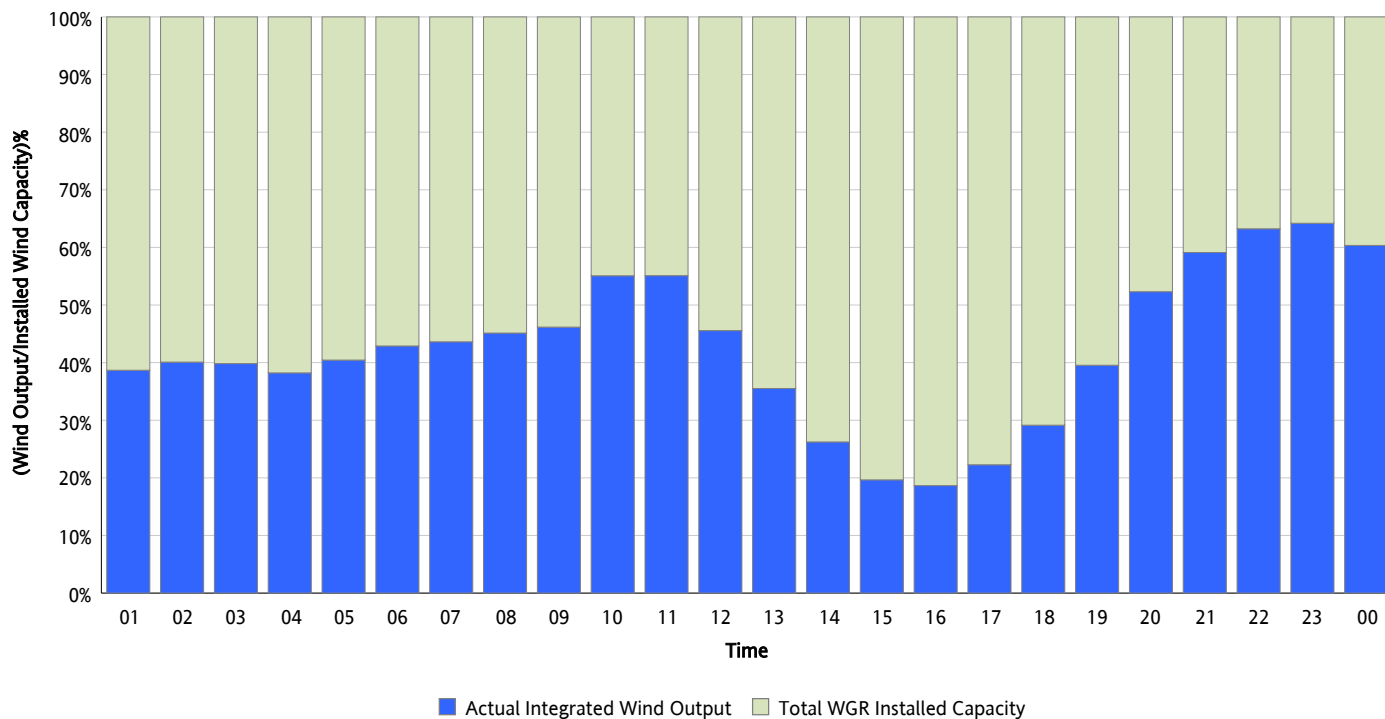
06/09/2012



* Wind Record and Wind Max represent instantaneous values and the rest of the values are integrated over the hour

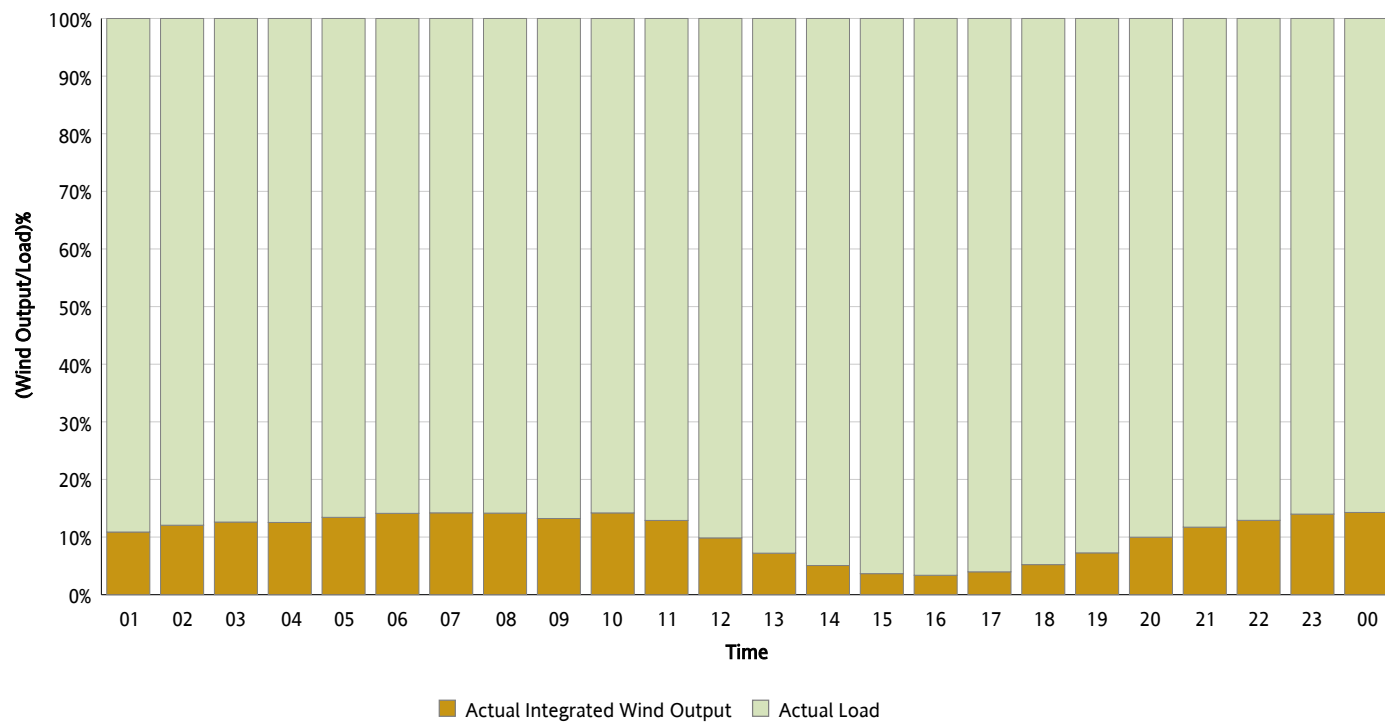
Actual Wind Output as a Percentage of the Total Installed Wind Capacity

06/09/2012



Actual Wind Output as a Percentage of the ERCOT Load

06/09/2012



ERCOT Load vs. Actual Wind Output

06/02/2012 - 06/09/2012

